

Recovery and Expansion from the 2008-09 Recession, and its Impact on Tax Revenues



Louisville-Jefferson County Government

by

Paul Coomes, Ph.D.

Professor of Economics

University of Louisville

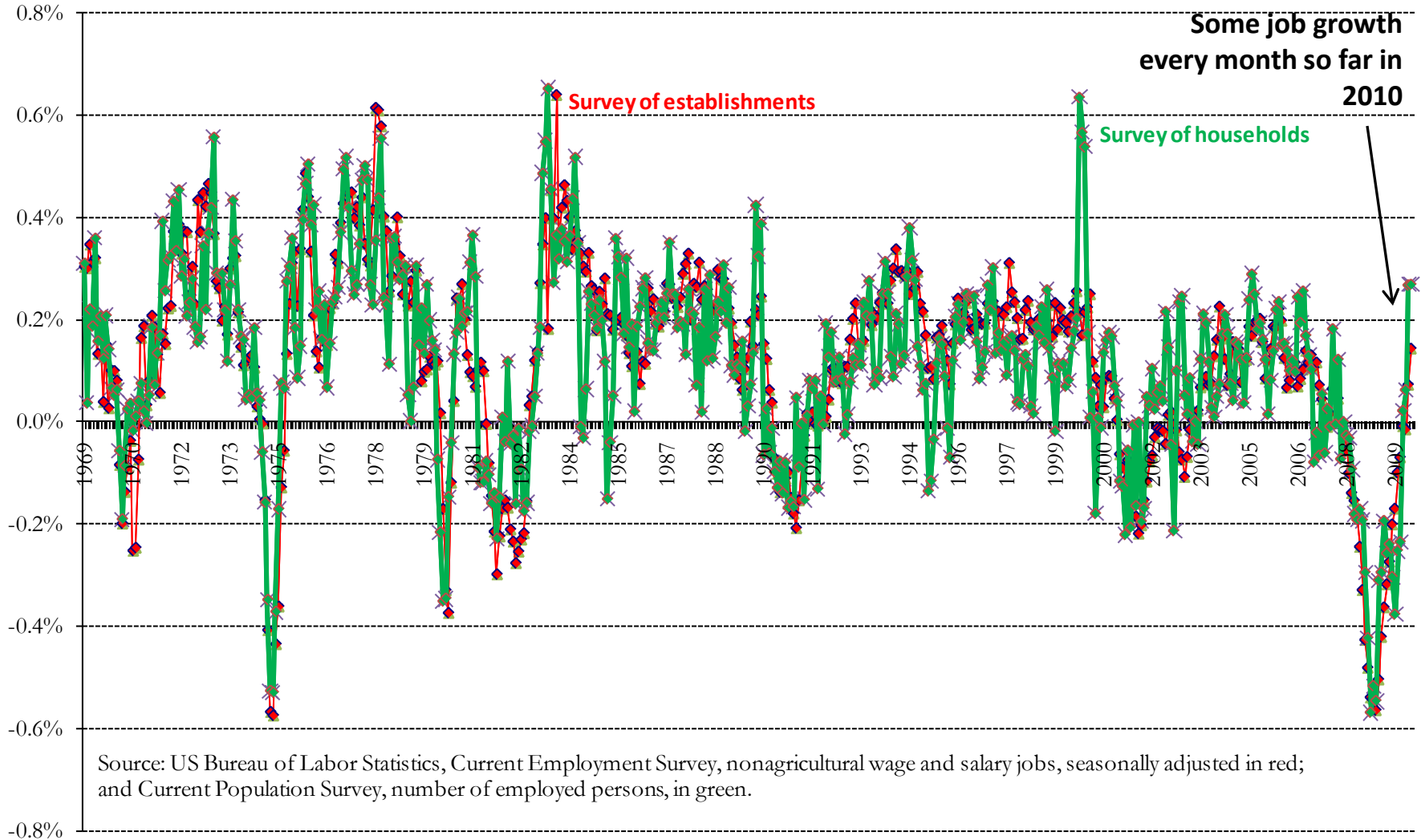
June 1, 2010

College of Business

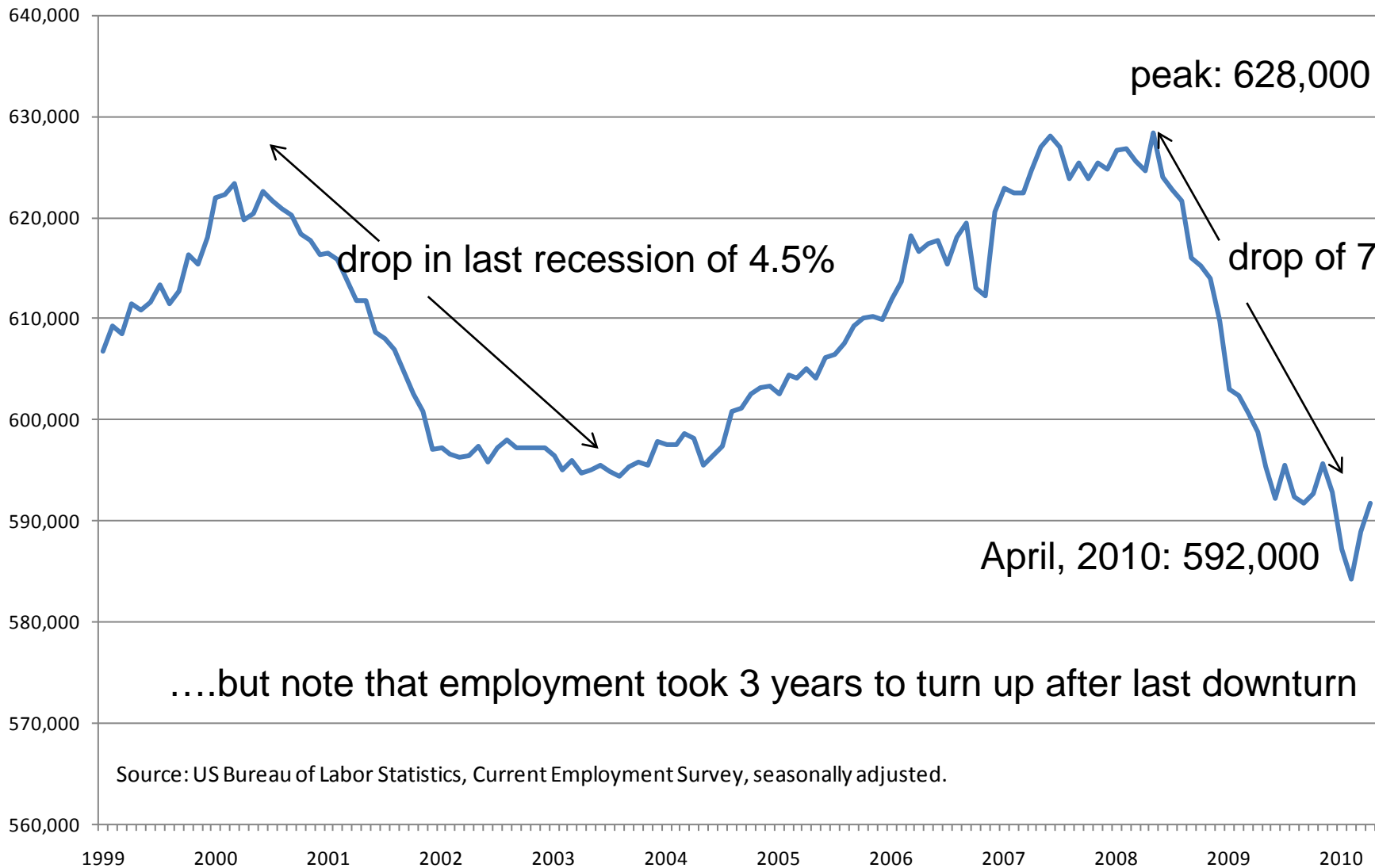


Monthly Growth in United States Employment, 1969 to 2010 (April)

smoothed 3-month moving average



Total Nonagricultural Wage and Salary Jobs, Louisville MSA



....but note that employment took 3 years to turn up after last downturn

Source: US Bureau of Labor Statistics, Current Employment Survey, seasonally adjusted.

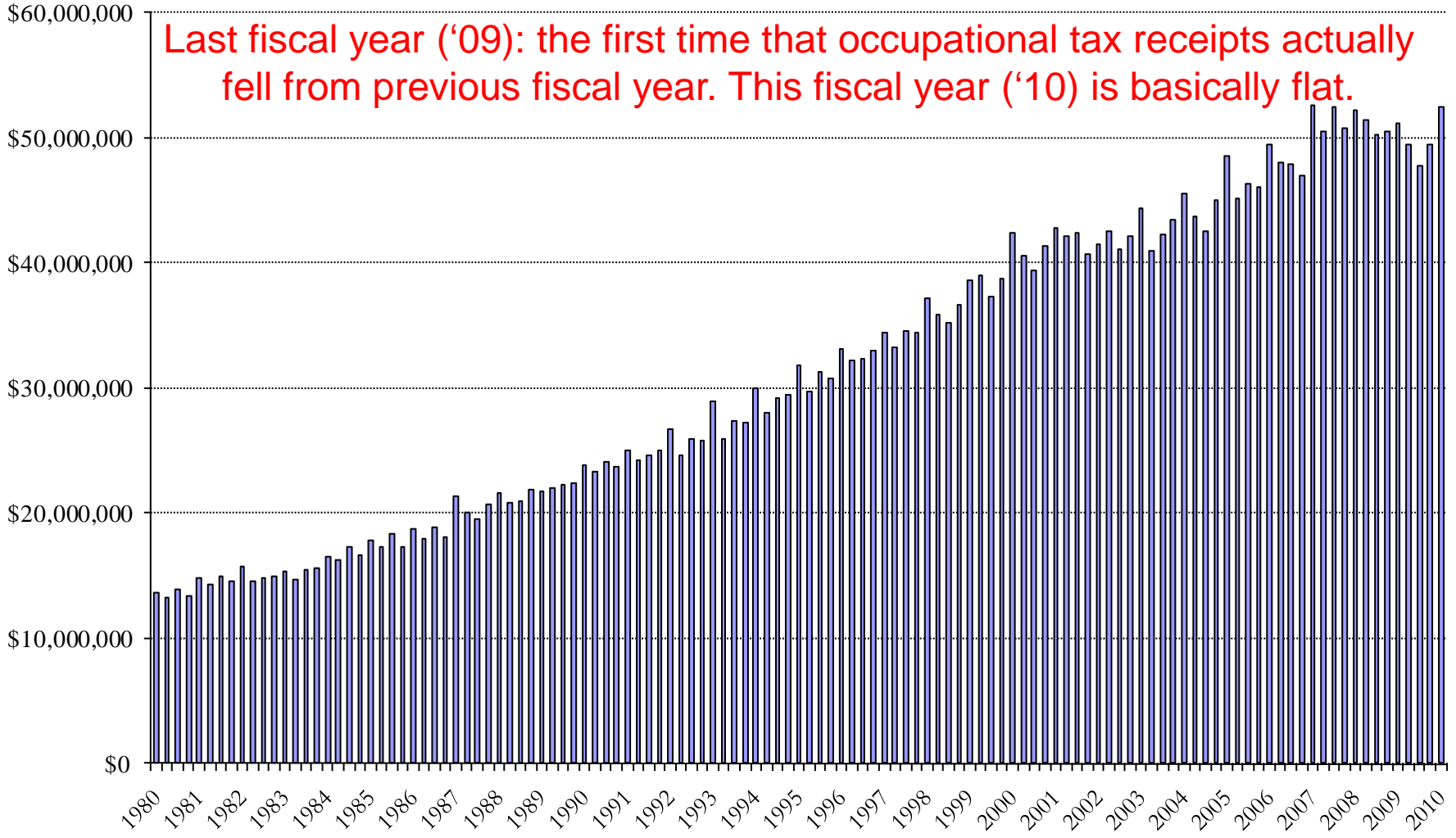
Job Growth in Louisville MSA, 2000 to 2009

Sector	2000	2007	2008	2009	Growth, 9 years		Growth, 1 year	
Construction & Mining	34,000	33,900	34,400	30,700	-3,300	-9.7%	-3,700	-10.8%
Manufacturing	95,000	77,300	73,200	64,600	-30,400	-32.0%	-8,600	-11.7%
Wholesale Trade	31,400	30,300	29,900	28,200	-3,200	-10.2%	-1,700	-5.7%
Retail Trade	70,300	65,400	64,300	61,100	-9,200	-13.1%	-3,200	-5.0%
Transportation and Utilities	41,800	44,300	43,100	40,100	-1,700	-4.1%	-3,000	-7.0%
Information	12,400	10,500	10,500	9,800	-2,600	-21.0%	-700	-6.7%
Financial Activities	37,600	43,400	43,400	42,400	4,800	12.8%	-1,000	-2.3%
Professional and Business Services	66,300	73,700	74,100	70,500	4,200	6.3%	-3,600	-4.9%
Educational and Health Services	66,300	78,400	80,200	81,900	15,600	23.5%	1,700	2.1%
Leisure and Hospitality	58,800	59,900	60,300	59,200	400	0.7%	-1,100	-1.8%
Other Services	29,300	28,000	27,500	26,000	-3,300	-11.3%	-1,500	-5.5%
Government	77,300	79,800	80,600	81,300	4,000	5.2%	700	0.9%
Total nonfarm	620,400	624,900	621,300	595,800	-24,600	-4.0%	-25,500	-4.1%

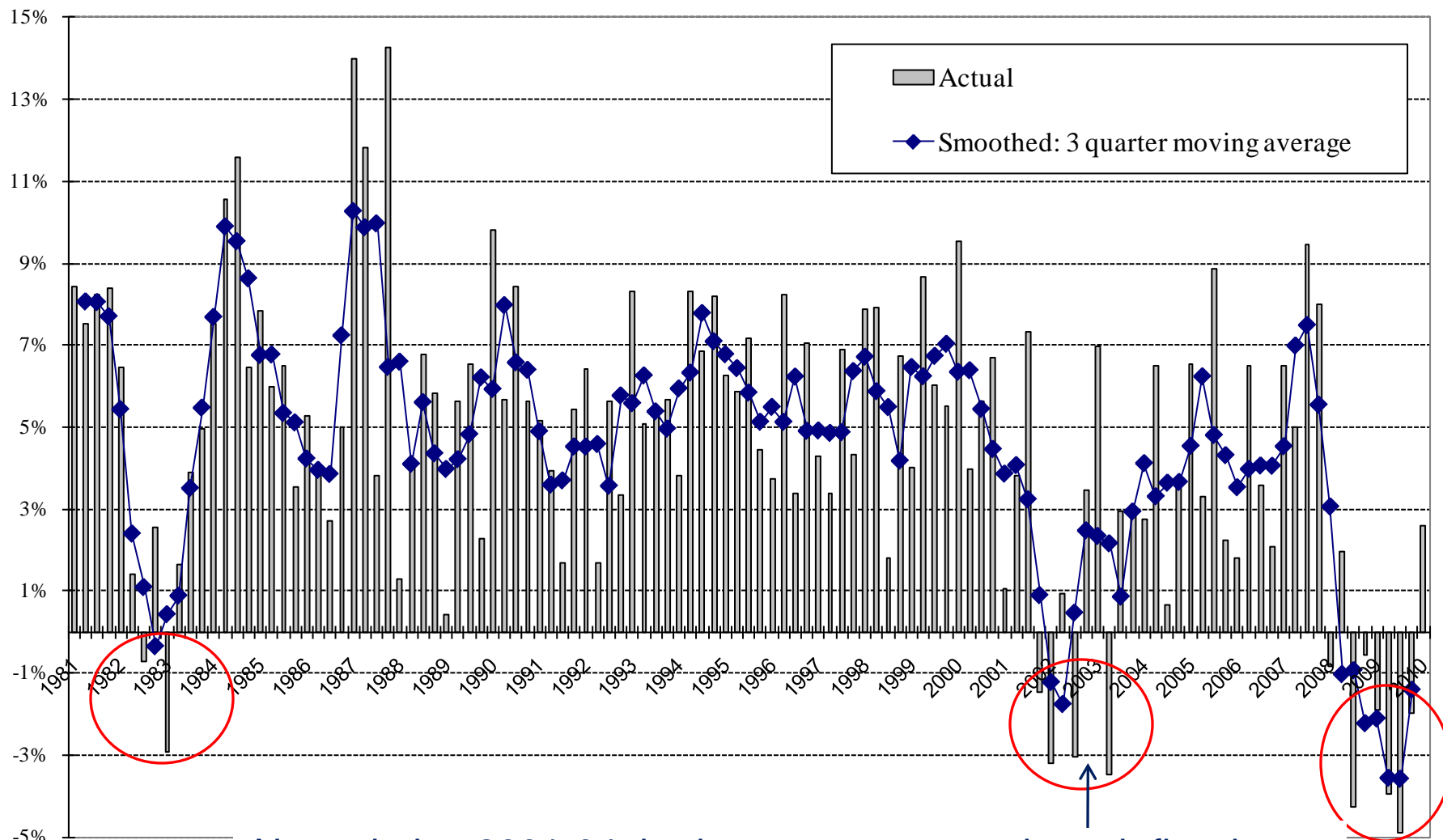
Source: US Bureau of Labor Statistics. Estimates for nonagricultural wage and salary jobs; 2009 estimates are preliminary.

Occupational Tax Receipts to City of Louisville & Jefferson County Governments by calendar quarter, 1980 I through 2010 I

Last fiscal year ('09): the first time that occupational tax receipts actually fell from previous fiscal year. This fiscal year ('10) is basically flat.

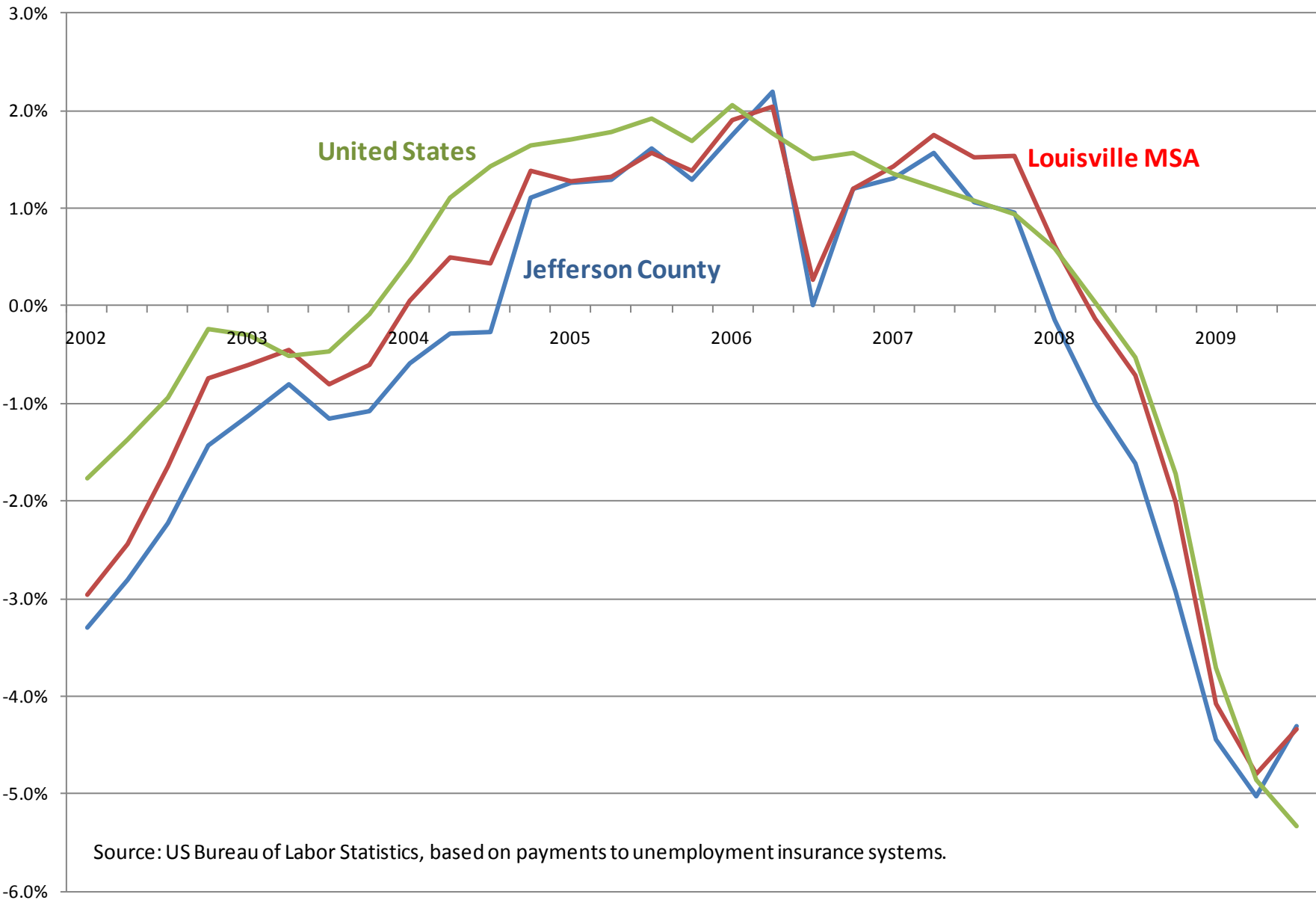


Year-over-year growth in Occupational Tax Receipts City & County governments, quarterly, 1981 I - 2010 I



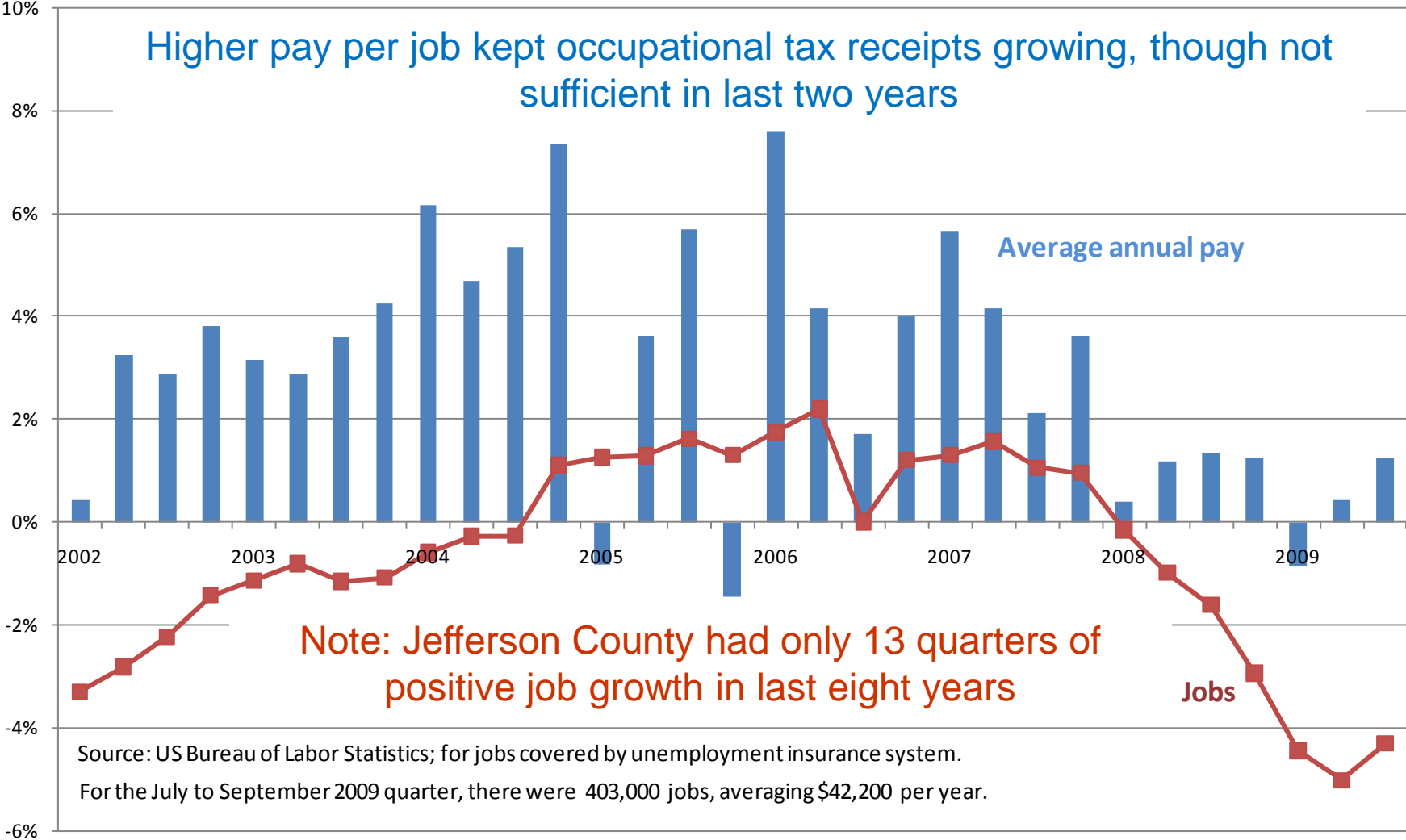
Note: during 2001-04, had tax revenue growth each fiscal year without job growth, due to increases in average pay.

Year-over-Year Growth in Quarterly Wages and Salaries, 2002-9

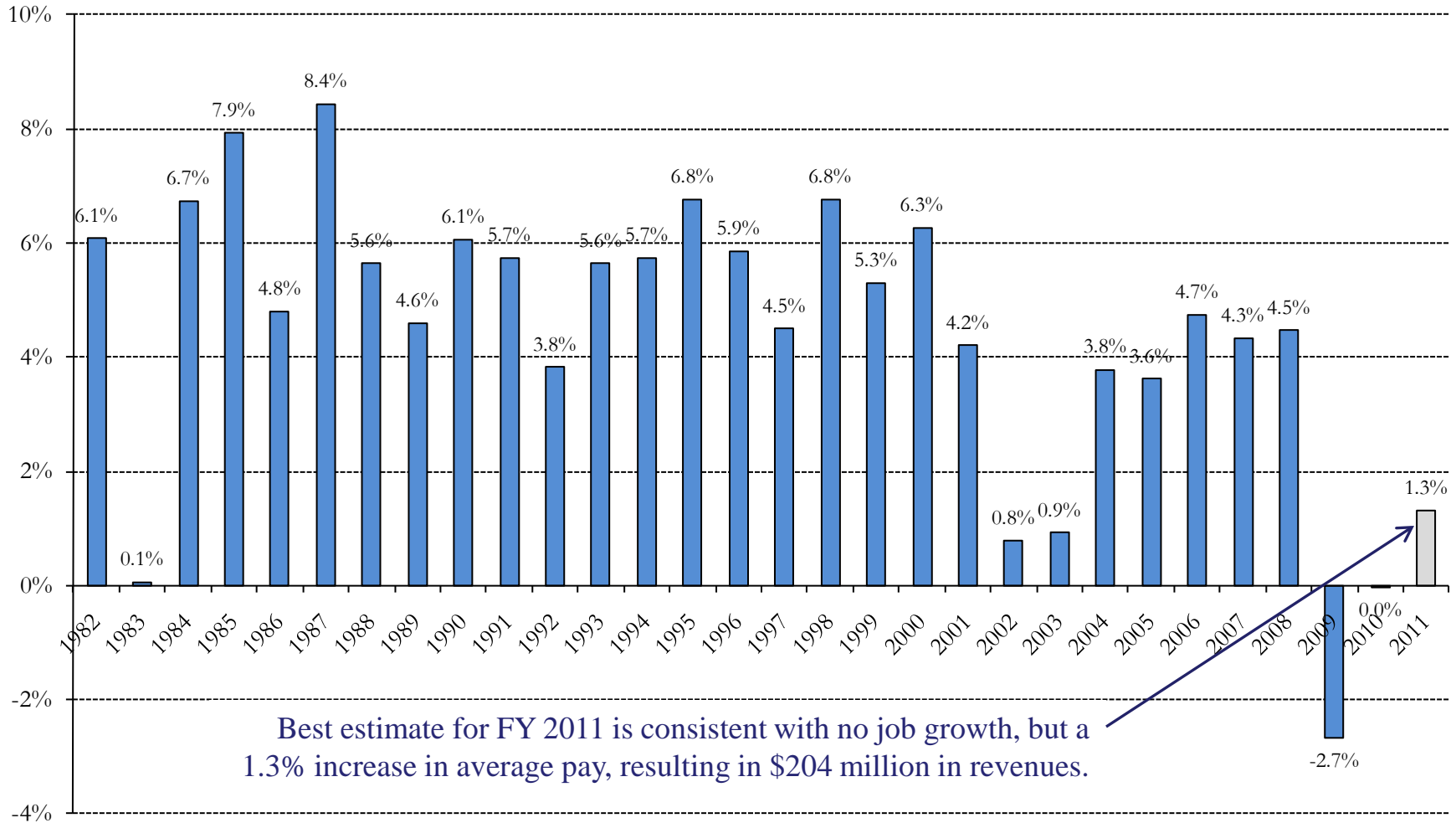


Source: US Bureau of Labor Statistics, based on payments to unemployment insurance systems.

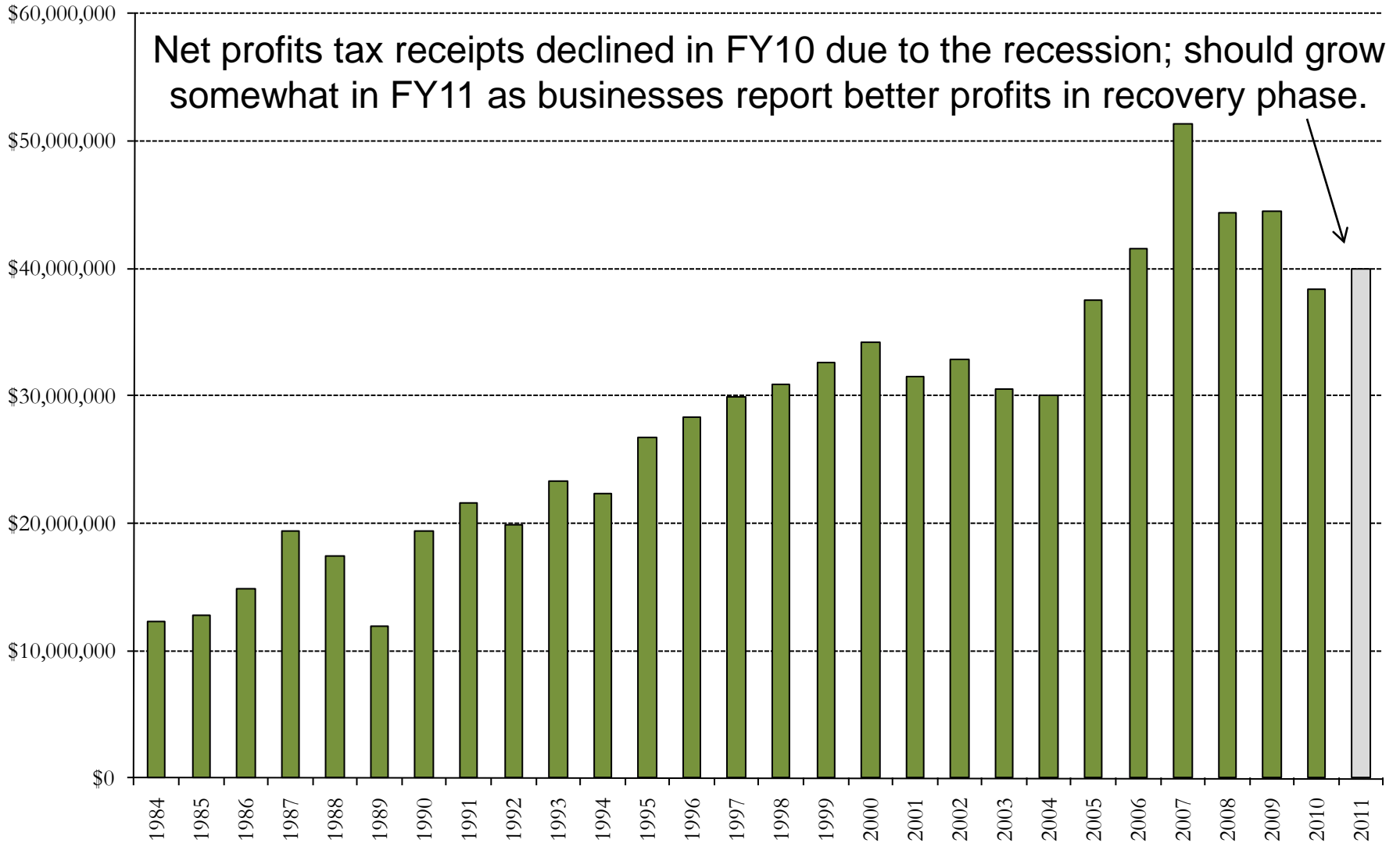
Year-over-Year Growth in Jobs and Average Pay, by quarter, Jefferson County, 2002 I to 2009 III



Fiscal Year Growth Rate Occupational Tax Receipts, City & County Governments

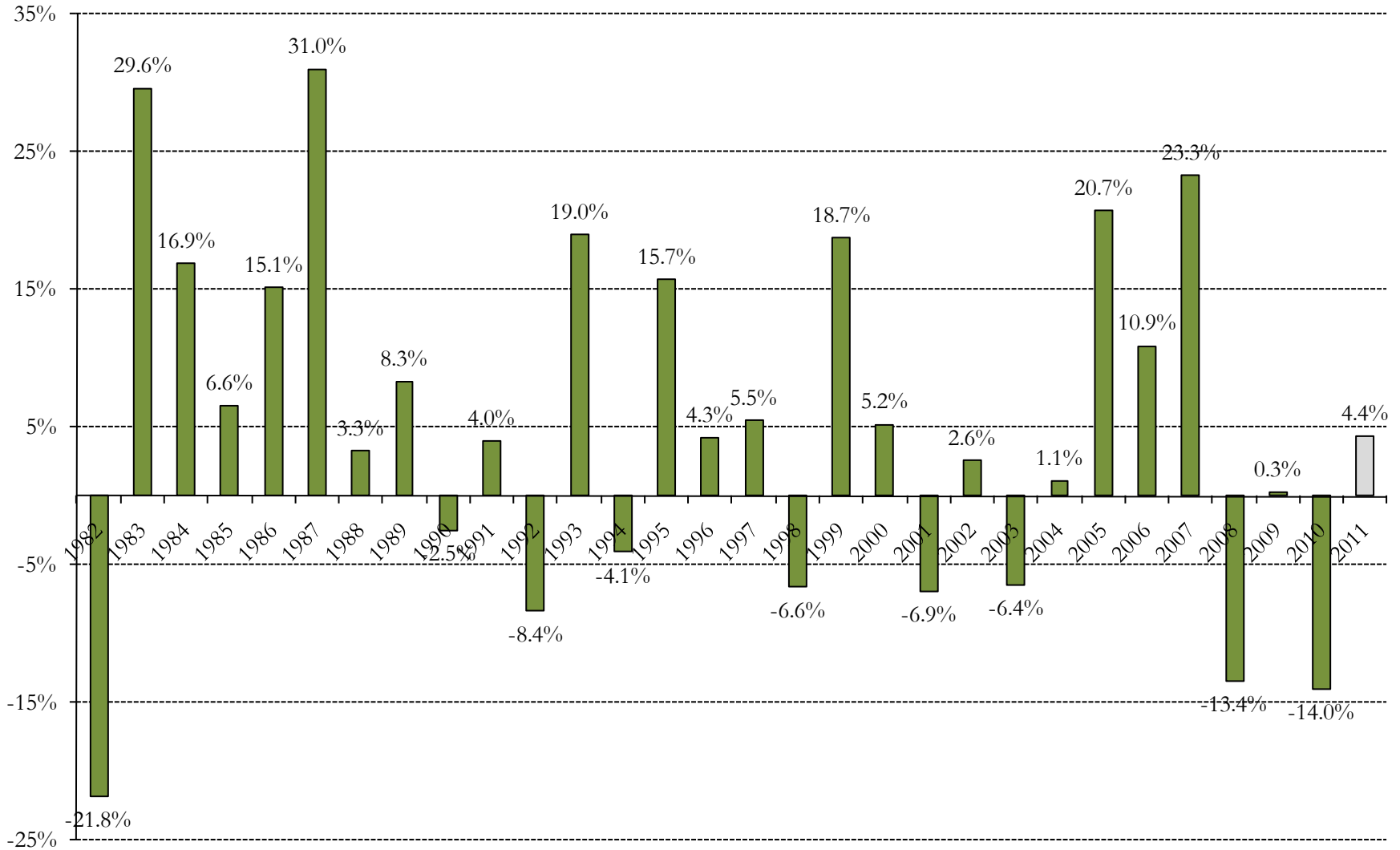


Net Profits Tax Collections, Fiscal Years City & County Governments

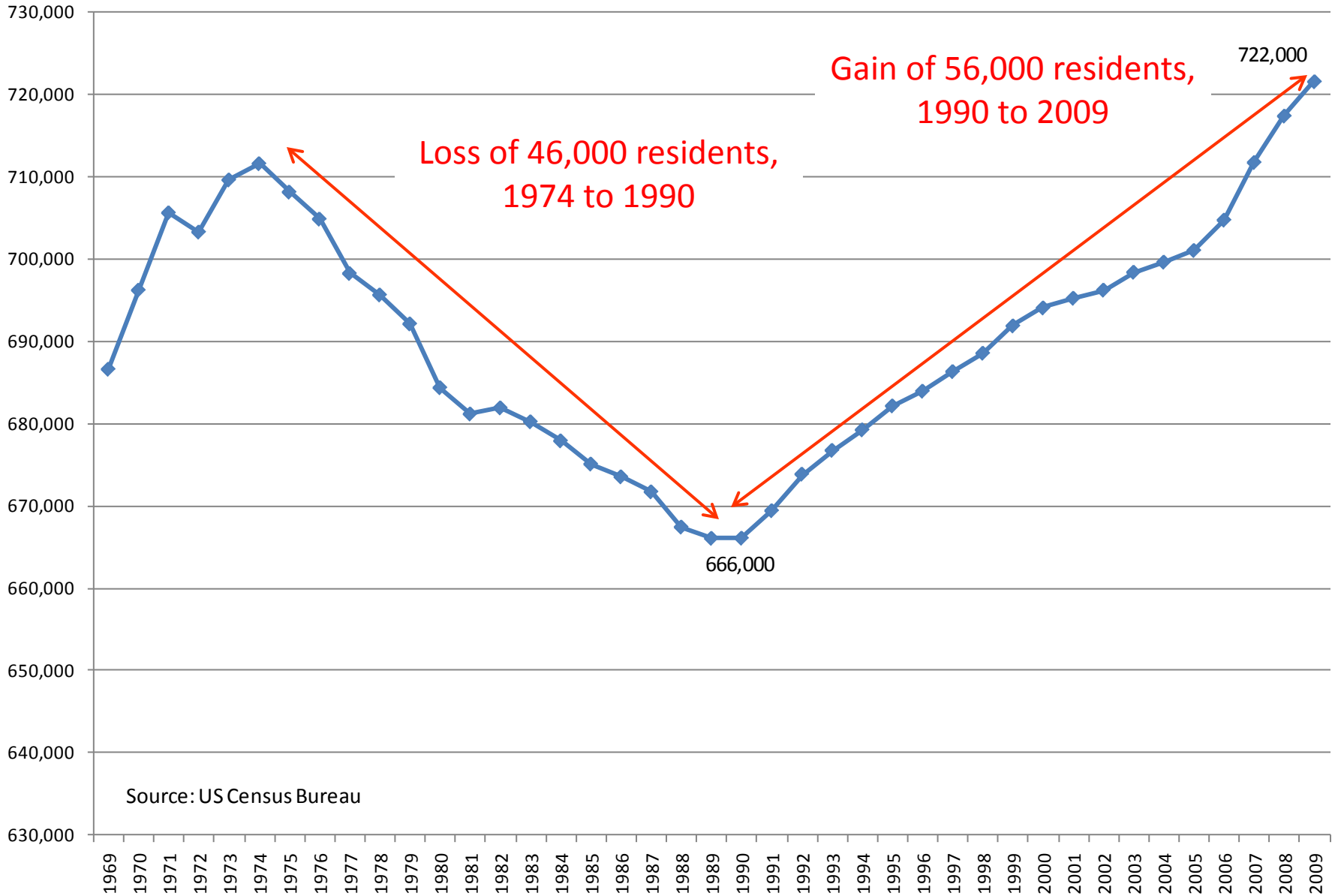


Fiscal Year Growth Rate

Net Profits Tax Receipts, City & County Governments



Jefferson County Population, Four Decades



Source: US Census Bureau

Population Growth This Decade, Jefferson County	
Population, 2000	694,067
+ Births	92,653
- Deaths	64,567
= Natural increase	28,086
Net international migration	13,270
Net domestic migration	-8,555
<i>statistical discrepancy</i>	-4,814
= Growth in Population, 2000 to 2009	27,987
Population, 2009	721,594

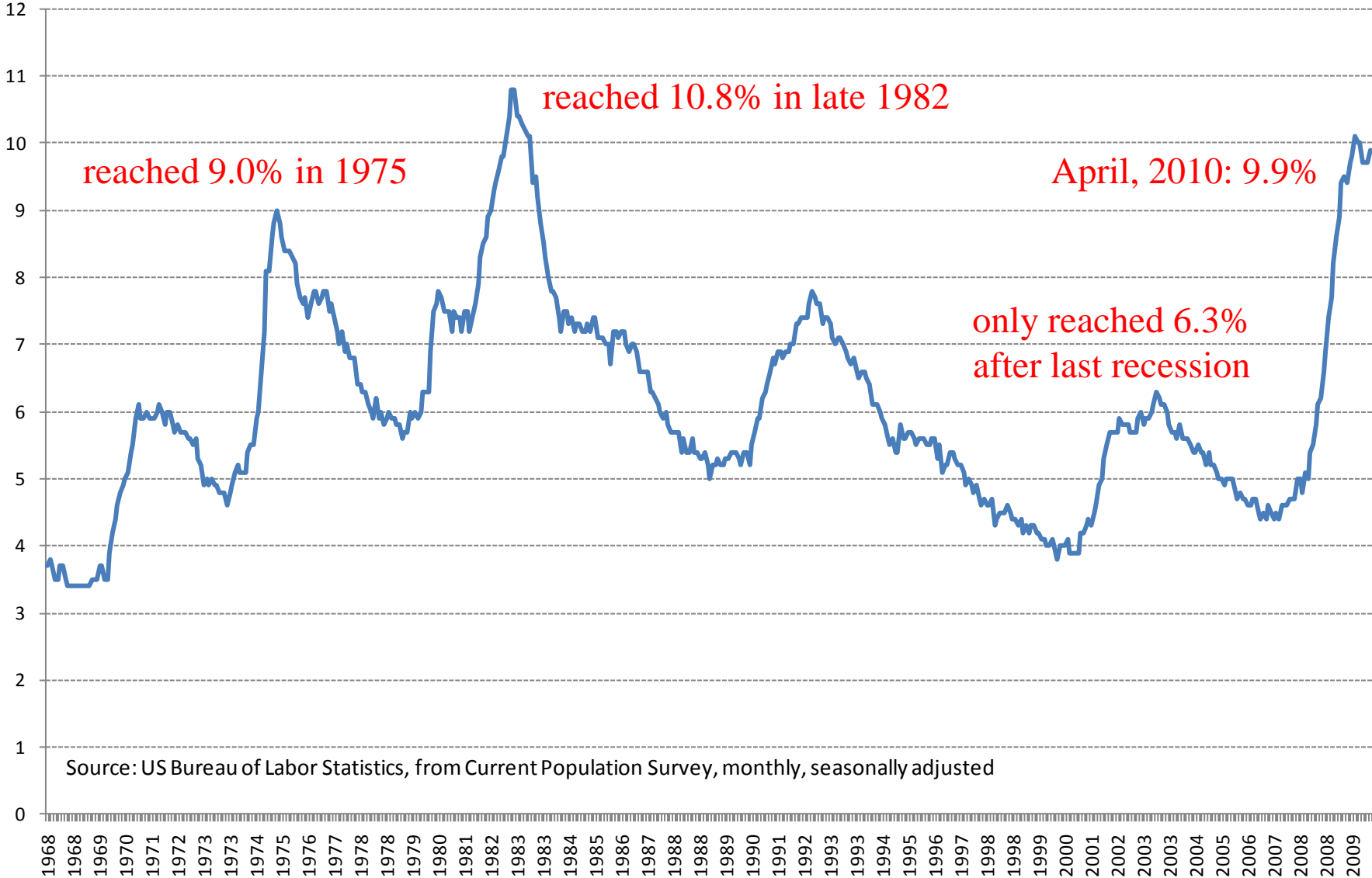
Population Growth This Decade, Louisville MSA	
Population, 2000	1,165,132
+ Births	150,523
- Deaths	101,831
= Natural increase	48,692
Net international migration	17,024
Net domestic migration	34,381
<i>statistical discrepancy</i>	-3,934
= Growth in Population, 2000 to 2009	96,163
Population, 2009	1,258,577





Unemployment Rate

percent of labor force unsuccessfully seeking work



reached 9.0% in 1975

reached 10.8% in late 1982

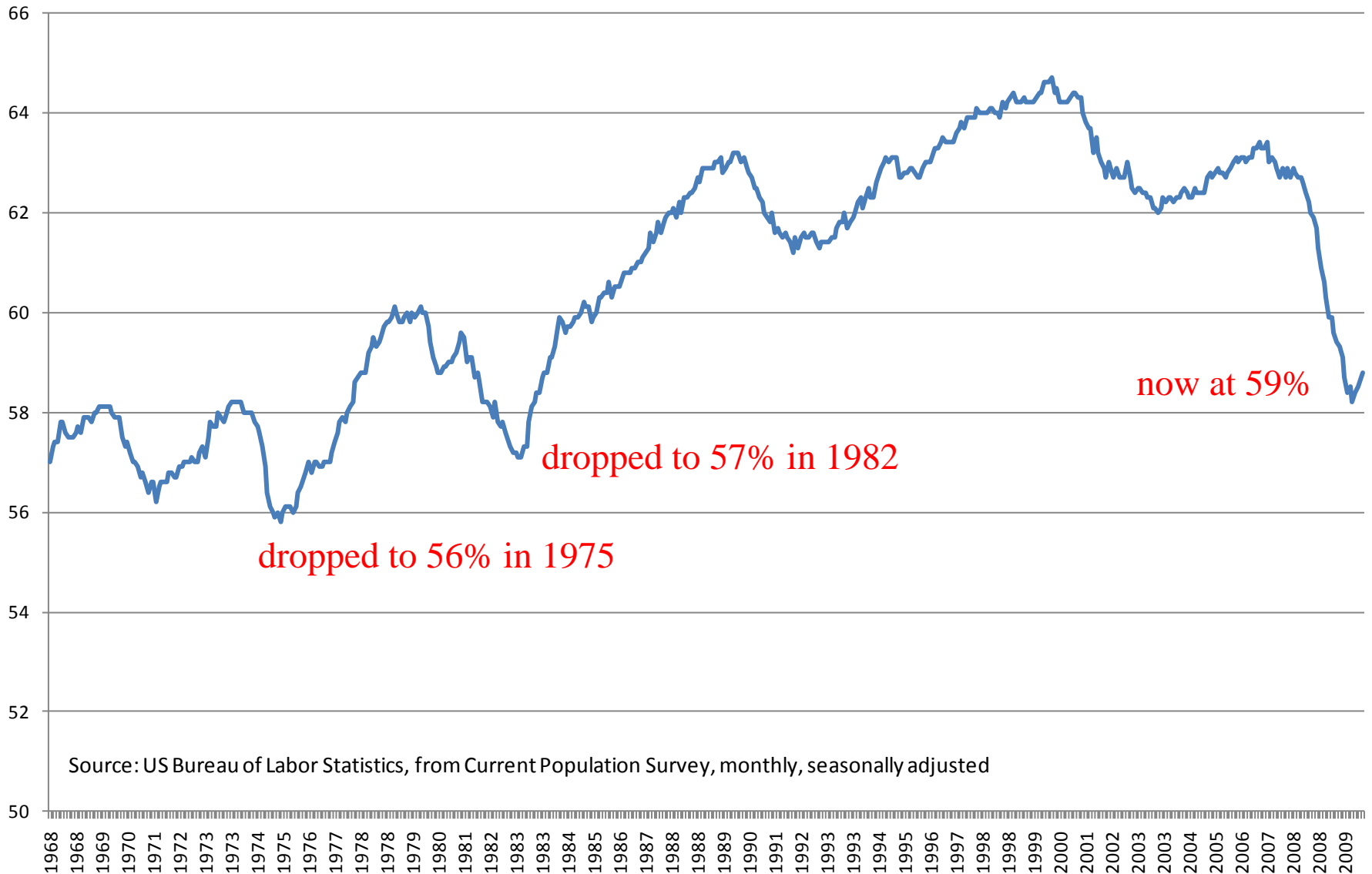
April, 2010: 9.9%

only reached 6.3% after last recession

Source: US Bureau of Labor Statistics, from Current Population Survey, monthly, seasonally adjusted

Employment to Population Ratio

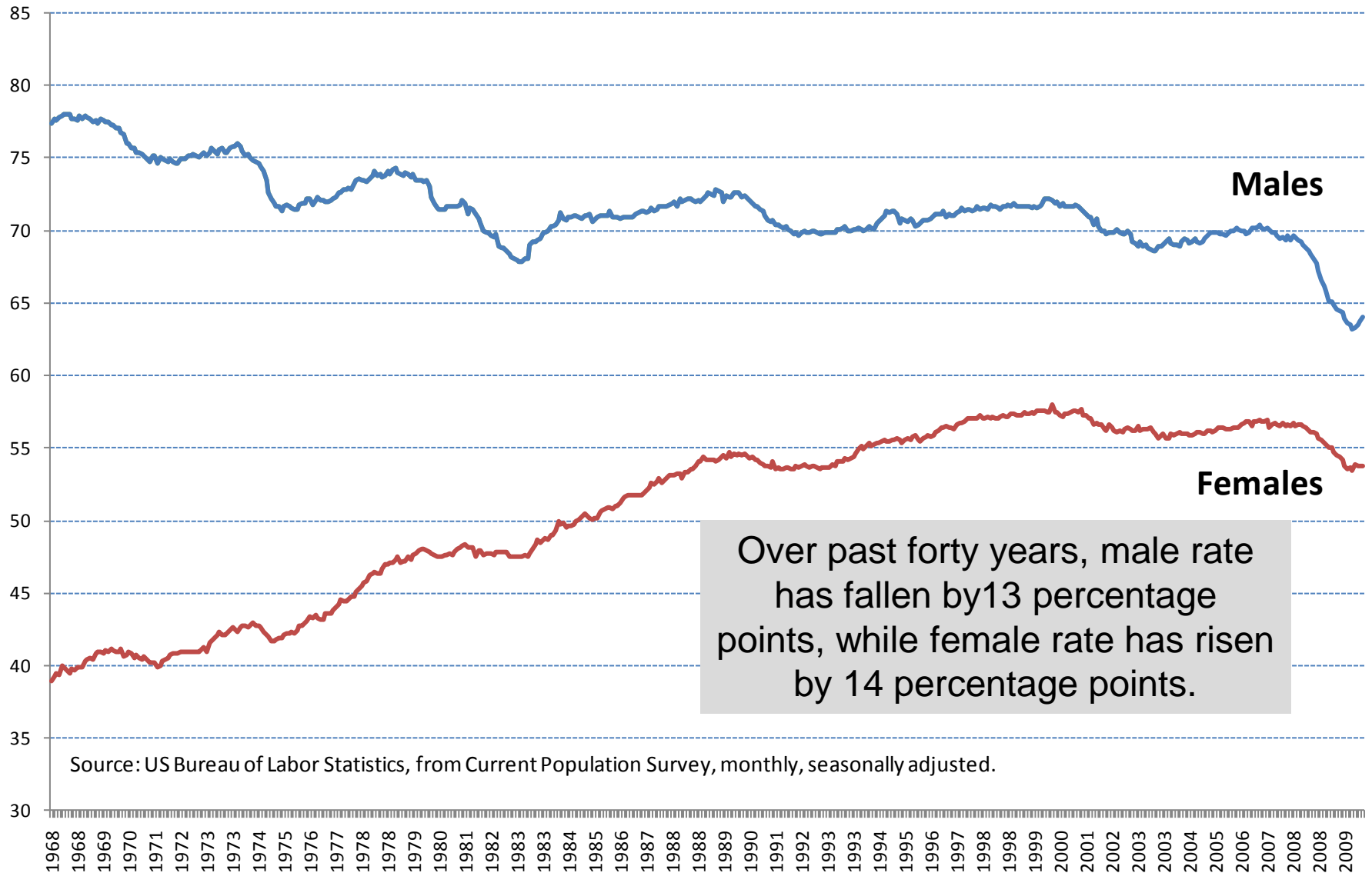
% of those aged 16+ working, male and female (through April 2010)



Source: US Bureau of Labor Statistics, from Current Population Survey, monthly, seasonally adjusted

Employment to Population Ratio

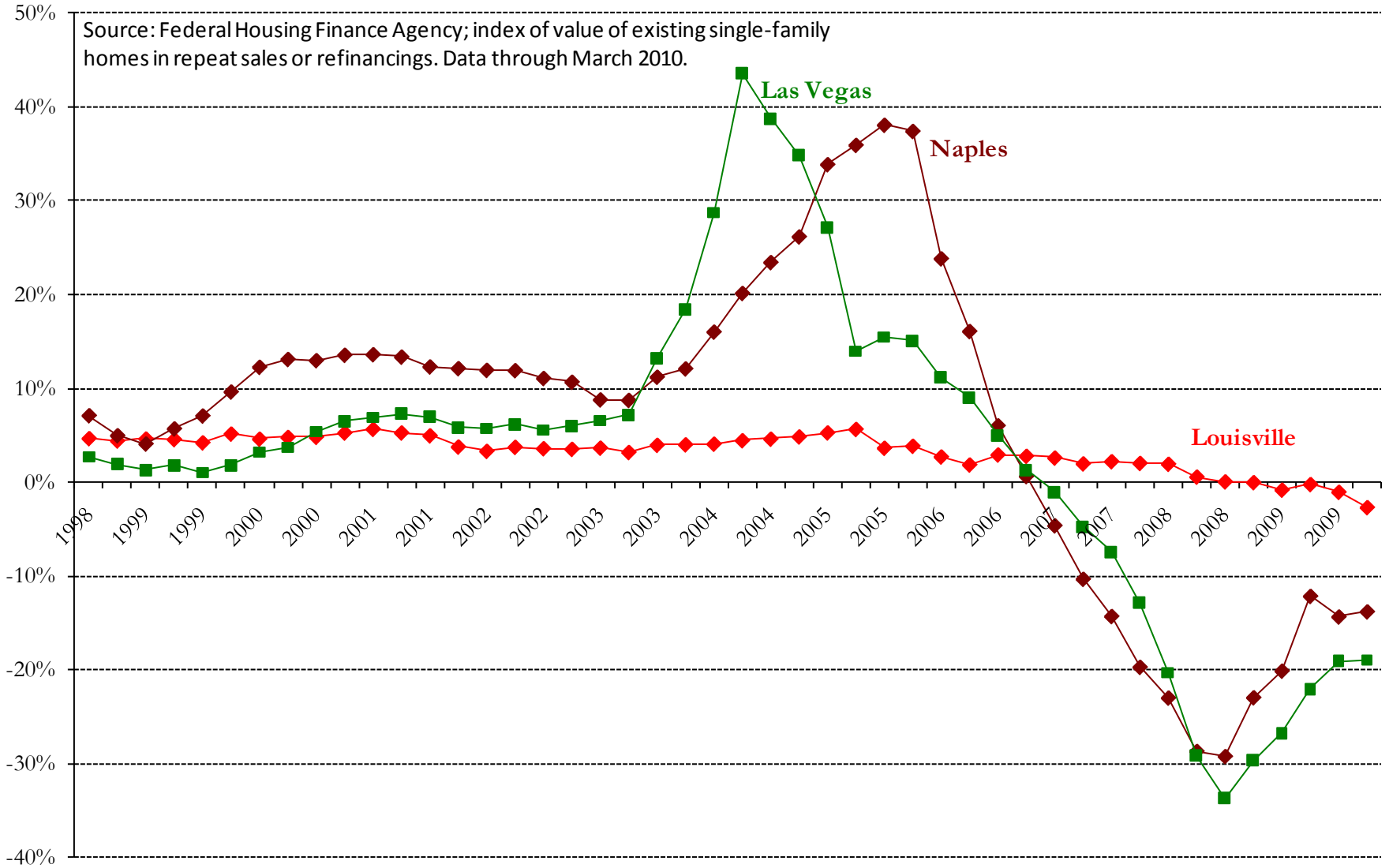
% of those aged 16+ working (through April 2010)



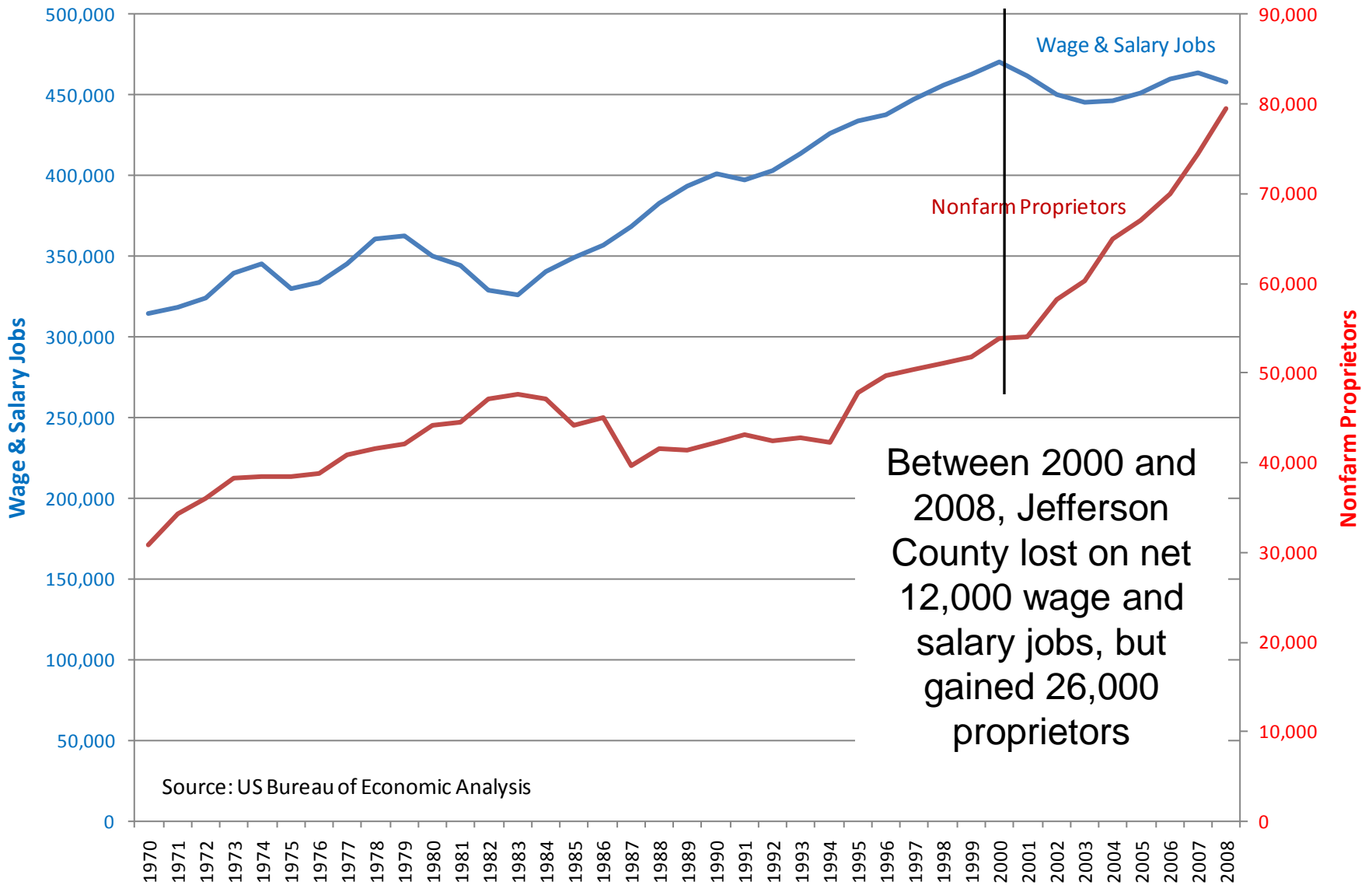
Source: US Bureau of Labor Statistics, from Current Population Survey, monthly, seasonally adjusted.

Annual Home Price Appreciation, Last Ten Years by Quarter

Source: Federal Housing Finance Agency; index of value of existing single-family homes in repeat sales or refinancings. Data through March 2010.



Growth in Wage & Salary Jobs vs. Nonfarm Proprietors, Jefferson County, 1970 to 2008



Average Annual Earnings per Job and Proprietor Jefferson County, 1970 to 2008

